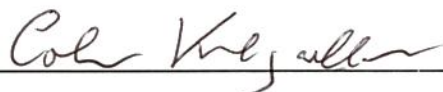


STAFF INDUCTION AND STUDENT TEACHER PLACEMENT POLICY 2023

Ardgillan College

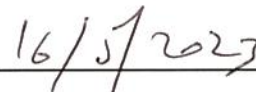
Date for review: May 2025



Colm Kilgallon

Chairperson

Board of Management



Date ratified by the Board of Management

MISSION STATEMENT

Ardgillan Community College promotes a happy and caring community where students are encouraged and supported to reach their full potential. Teamwork, respect and the pursuit of excellence form cornerstones of the college philosophy. The ethos of the college is based on respect, tolerance and understanding while appreciating the diversity of our changing world. The college aims to provide a broad education for all students and to nurture their individual abilities and talents.

Ardgillan College's motto is 'Mol an Óige agus Tíocfaidh Sí' (Praise the young and they will flourish).

INTRODUCTION

Ardgillan College delivers a six-year cycle from first year to sixth year. The college promotes a happy and caring school climate where pupils are encouraged and supported to reach their full potential. Teamwork, respect and the pursuit of excellence form the cornerstones of the college philosophy. The characteristic spirit of the college is based on respect, tolerance and understanding while appreciating the diversity of our changing world. The college aims to provide a broad education for all students and to nurture their individual abilities and talents. The emphasis is placed on quality teaching and learning, positive behaviour and the pursuit of standards of excellence in all areas of the school activities.

RATIONALE

Induction is essential for all new employees and student teachers. Good induction recognises the contribution that all staff and student teachers make to the success of a school and it has benefits for both the individual and the school.

AIMS

The Ardgillan induction programme aims to:

- Ensure that all our new staff and student teachers are welcomed, valued and appreciated
- Provide new staff and student teachers with a good knowledge of the practices in the college
- Ensure that new staff and student teachers are clear about their role and responsibilities
- Encourage and support commitment to the vision and values of the college

-
- Contribute to raising educational standards by enabling staff and student teachers to become fully established in their new role as quickly as possible
 - Reduce individual stress and facilitate teamwork by supporting new staff as they begin in the college
 - Promote trust and openness

1. STAFF INDUCTION

Ardgillan College Induction Coordination

The role of the Staff Induction Support / Droichead Team is facilitative so that new and beginning teachers feel that the issues that concern them can be addressed. The Co-ordinators lead regular support meetings. These include school meetings on an informal basis, each new staff member being assigned a mentor and welcome evenings will be held in head office in early October.

Induction Support / Droichead Team:

- Caitriona Rooney - Staff Induction Co-ordinator
- Michelle Laheen
- Alva Cushen
- Aideen Prior
- Ronan McBrearty
- Patrick Egan

Roles and Responsibilities

The Principal:

- Meets and welcomes the new staff members
- Holds an introductory staff meeting
- Introduces the Staff Induction Coordinator and Support Team

Induction Support Team:

- Provides each new staff member an induction pack (see Appendix 1 for contents)
- Outline's school organisation

-
- Oversees and manages Induction programme for new and beginning staff
 - Sets a time and date for an initial meeting

Deputy Principal

- Allocates classrooms
- Distributes timetables
- Ensures new staff have logins for PCs, Office 365 and VSWare

Induction Programme

At the induction programme, staff will be provided with a welcome pack which will include:

- A welcome letter from the Principal
- Introduction to the school
- Introduction to DDLETB and head office
- Personal timetable
- Staff list of members, subjects taught, and positions held
- Information regarding merit systems and the effective use of the student school journal
- Personal and professional support information
- Advice on Ardgillan College classroom management
- Procedures when dealing with students
- Policies (e.g. Child Protection (pink sheet), Health and Safety)
- A school tour and informal introduction will take place on the first day with the Induction Support Team

Mentor/Peer Support is a key element in the induction of new staff, where colleagues provide on-going informal support on a day-to-day basis. New staff members are introduced to colleagues in the same department and assigned a mentor who provides information and support that is specific to their subject area.

2. STUDENT TEACHER INDUCTION

Introduction

Ardgillan College acknowledges the following regarding initial teacher education and the role of school placement in this process.

- Positive school placement experience are critical to ensuring appropriate initial teacher education for all student teachers.
- Close collaboration between schools and Higher Education Institutions (HEIs) (see Appendix 2 for contact details) is essential to positive and meaningful school placement experience for student teachers.
- It is desirable that schools host student teachers for placement and, in doing so, provide student teachers with the opportunity to observe teaching and to teach classes independently, in collaboration with suitable qualified practicing teacher.
- During school placement, student teachers require the support of the whole-school community in their journey towards professional competence.
- Hosting student teachers on placement is enriching for the learners in a school, student teachers, co-operating teachers, the wider school community and HEIs. Learners benefit from a greater variety of teaching, learning and co-curricular experiences through the structured participation of student teachers in the school. Furthermore, the school gains access to a variety of newer approaches to teaching and learning through its engagement with student teachers and HEI staff.
- HEI placement tutors benefit from partnership with schools and from being in the actual setting of a school during visits to student teachers.

Commitment to hosting student teachers

Ardgillan College is committed to hosting student teachers for school placement and, in this context, adopts without modification as part of this school placement policy the *Guidelines on School Placement* developed by the Teaching Council in consultation with all relevant education partners. All applicants will be selected based on performance during the recruitment process. All teaching staff are eligible to be co-operating teachers.

Implications for the school hosting teachers on placement

Hosting a student teacher on placement will involve the student teacher observing classes being taught by members of the school's teaching staff. It will also involve student teachers teaching classes, in the first instance, while being observed and supported by the

teacher with primary responsibility for the welfare and educational progress of the class (the co-operating teacher). Then, as the student teacher's competence develops, the student teacher will move to teaching classes independently in line with HEI requirements and the student teacher's particular stage of development on the ITE programme.

The co-operating teacher must be on the school premises when the Professional Master of Education (PME) is teaching their classes and available for support if needed. When serious concerns are identified in relation to a student teacher's conduct, the co-operating teacher must advise school management.

Scheduling of student teachers on placement

The Principal and/or Deputy Principal/s will allocate student teachers to co-operating teachers and classes, having regard for: the stage the student teachers is at in his/her initial teacher education programme; the particular needs of the learners in a particular class; the requirement for the student teacher to experience an appropriate range of placement contexts; and any special circumstances of which the co-operating teacher has an awareness. PMEs will not be timetabled to teach classes other than those on their PME timetable.

Induction of student teachers on placement

Student teachers will, prior to commencing their placement, be provided with an orientation to the key personnel, ethos and work of the school. This orientation shall involve student teachers being provided with an information pack that will include details of key school policies, in particular the school's Code of Positive Behaviour, Child Protection, Health and Safety Statement, Homework and Staff Induction & Student Teacher Placement Policies. The Teaching Council *Code of Professional Conduct for Teachers* can be found in Appendix 3.

Supports for the student teacher

The school community is committed to supporting positively and sensitively the student teacher in accordance with the Guidelines on School Placement developed by the Teaching Council in consultation with all relevant education partners. Furthermore, the school is committed to allocating the student teacher to (an) appropriate co-operating teacher(s) and to the classes essential to him/her undertaking his/her school placement successfully. The school will also provide the student teacher with the teaching facilities and resources necessary to his/her work during the placement.

A PME is welcome to accompany and observe their co-operating teacher at Parent-Teacher meetings if desired.

Communication to parents must be channelled through the co-operating teacher or Year Head.

Continuing professional development for staff involved in supporting/facilitating student teacher placement

The school management authority and the school's senior management are committed to promoting and facilitating the participation of school staff in continuing professional development programmes essential to ensuring the successful operation of student teacher placement in the school.

Communication of school placement policy to school community

A copy of the school placement policy is made available to school personnel and the policy is readily accessible to parents on request. In particular, a copy of the policy shall be published on the school website and a copy is made available to parents/guardians of all learners enrolling in the school and all new teachers at the point of their employment, either electronically or in hard copy.

Appendix 1

Contents of Induction Booklet

Mission Statement:	1
School Details:	2
First Aid Team Ardgillan:	3
Child Protection	4
Procedures and Points to Note	5
Getting your VSWare Password	8
VShare – Roll Call	9
VShare – Exam Results	10
End of Term Report Comments:	11
Accessing Student SEN Information	12
VShare – Timetable and S&S	13
S&S – Substitution & Supervision:	14
Student Behaviour Procedures in Ardgillan:	15
In House Exams – Cover Sheet	18
Checklist – Subject Inspection:	19
New Junior Cycle Grading System:	20
New Leaving Cycle Grading System:	20
Using the Photocopier	21
Accessing Microsoft 365 Outside of the School	24
GDPR	25
Mentor System:	26
What is Droichead?	27
Checklist	28

Appendix 2

Contact Details For HEIs

AMI Montessori College, Dublin	Web: www.montessoriami.ie Email: info@montessoriami.ie Ph: 01 2692499
Church of Ireland College of Education	Web: www.cice.ie Email: info@cice.ie Ph: 01 4970033
CIT Crawford College of Art & Design	Web: www.cit.ie Email: mary.mcronin@cit.ie / tom.oconnell@cit.ie Ph: 021 4335200
Dublin City University (DCU)	Web: www.dcu.ie Email: kirsty.rickard@dcu.ie Ph: 01 7005223
Froebel Department of Primary and Early Childhood Education	www.nuim.ie/froebel Email: froebelsp@nuim.ie Ph: 01 4747400
Galway-Mayo Institute of Technology (GMIT)	Web: www.gmit.ie Email: regina.daly@gmit.ie Ph: 091 753161
Hibernia College Dublin	Web: www.hiberniacollege.com Email: info@hiberniacollege.net Ph: 01 6610168
Limerick Institute of Technology (LIT)	Web: www.lit.ie Email: information@lit.ie Ph: 061 208208
Marino Institute of Education	Web: www.mie.ie Email: schoolplacement@mie.ie Ph: 01 8057700
Mary Immaculate College	Web: www.mic.ul.ie Email: sheila.kent@mic.ul.ie Ph: 061 204906
Mater Dei Institute of Education	Web: www.materdei.ie Email: info@materdei.dcu.ie Ph: 01 8086500

National College of Art & Design (NCAD)	Web: www.ncad.ie Email: fios@ncad.ie Ph: 01 6364200
National University of Ireland, Galway (NUIG)	Web: www.nuigalway.ie Email: education@nuigalway.ie Ph: 091 492195
National University of Ireland, Maynooth (NUIM)	Web: www.nuim.ie Email: education.department@nuim.ie Ph: 01 7083656
St Angela's College, Sligo	Web: www.stangelas.nuigalway.ie Email: admin@stangelas.nuigalway.ie Ph: 071 9143580
St Nicholas Montessori College	Web: www.snmci.ie Email: info@snmci.ie Ph: 01 2806064
St Patrick's College, Drumcondra	Web: www.spd.dcu.ie Email: olivia.bree@spd.dcu.ie (Registrar) Ph: 01 8842000
St Patrick's College, Thurles	Web: www.stpats.ie Email: office@stpats.ie Ph: 0504 21201
Trinity College, Dublin (TCD)	Web: www.tcd.ie Email: pmcdona@tcd.ie Ph: 01 8961503
University College, Cork (UCC)	Web: www.ucc.ie Email: education@ucc.ie Ph: 021 4902465
University College, Dublin (UCD)	Web: www.ucd.ie Email: education@ucd.ie Ph: 01 7167965
University of Limerick (UL)	Web: www.ul.ie Email: ehs@staffmail.ul.ie Ph: 061 202511

<https://www.teachingcouncil.ie/en/fileupload/registration/enhanced-supply-of-teachers-2020-2021/guidelines-on-school-placement-2013-.pdf>

Appendix 3

<https://www.teachingcouncil.ie/en/publications/fitness-to-teach/code-of-professional-conduct-for-teachers1.pdf>

An Chomhairle
Mhúinteoireachta
The Teaching Council



Code of Professional Conduct for Teachers

Updated 2nd Edition 2016



**The Code of Professional Conduct for Teachers published by the Teaching Council
in accordance with section 7(2)(b) of the Teaching Council Acts, 2001-2015**

Published by the Teaching Council, July 2016

Index

Foreword	2
Glossary	3
Introduction	4
Standards of teaching, knowledge, skills, competence and conduct	6
Complaints relating to registered teachers	9

Foreword

The Teaching Council is the professional standards body for teaching. The role of the Teaching Council is to promote and regulate the teaching profession. This includes establishing and promoting professional standards and supporting teachers' learning. Its establishment in 2006 represented a milestone in the development of teaching as a profession in Ireland, and had been advocated for by many in Irish education over several decades.

This also occurred against the backdrop of wider trends in professional standards in the late 1990's and earlier part of this century. This period saw the establishment of teaching councils in a number of countries around the world, with a similar remit to that of the Teaching Council here in Ireland. Professional standards, as opposed to a purely regulatory approach, are about the whole story of teaching and learning.

The Council's work over the last 10 years shows how important its dual mandate is in supporting professional practice in a holistic and sustainable way. Teachers teach so that others can learn. But the Code also acknowledges that teachers are learners too, and your learning needs to be supported and acknowledged.

Teaching and learning are vital for social and economic progress. By choosing this profession which is charged with leading these processes, you are assuming a great responsibility to lead learning for all learners in your care.

The Sahlberg International Review Report on Initial Teacher Education (2012) noted that Ireland was very fortunate in the calibre of people who were seeking to enter the profession. Ultimately, a common goal across the education community must be to ensure that new entrants to the teaching profession have the best possible start to their careers, and that teaching in Ireland continues to attract and retain high calibre teachers.

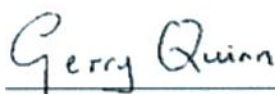
The Council works on the premise that advocacy and regulation are interdependent. This Code of Professional Conduct sets out the standards that teachers should adhere to at all stages of their career. It also describes a vision of what good teaching should look like. In this dual purpose, it epitomises the dual mandate of the professional standards body for the teaching profession.

Today, there are over 90,000 registered teachers in Ireland, serving education at primary, post-primary and further education levels. With almost 4,000 schools involving close to a million pupils/students, the contribution which the teaching profession makes to society is profound. Having a well-established tradition of service in Ireland, the profession enjoys high levels of public confidence and trust, as evidenced by research undertaken by the Teaching Council and other organisations.

Among the many important developments initiated in recent years to strengthen and underpin teaching in Ireland was the adoption of the Code of Professional Conduct for Teachers in 2007. This was done in accordance with Section 7(2)(b) of the Teaching Council Act, 2001 which provides that the Council shall "establish, publish, review and maintain codes of professional conduct for teachers, which shall include standards of teaching, knowledge, skill and competence".

The Council approved a 2nd edition of the Code of Professional Conduct for Teachers in 2012 following an extensive consultation process. This updated 2nd edition now takes on board recent amendments to the Fitness to Teach (Part 5) sections of the Teaching Council Acts 2001-2015.

The Teaching Council is committed to ensuring that the Code of Professional Conduct for Teachers is promoted and observed so as to maintain public trust and confidence in the teaching profession.



Gerry Quinn
Chairperson



Tomás Ó Ruairc
Director

July 2016

Glossary

Pupil/Student

The Code applies to registered teachers at primary and post-primary levels as well as in the further education sector. The term “pupil/student” denotes learners at primary, post- primary and further education levels.

Parent

The term “parent” denotes parents and legal guardians.

Teacher

The term “teacher” denotes a teacher registered with the Teaching Council.

Poor Professional Performance

A failure by the registered teacher to meet the standards of competence (whether in knowledge, skill or the application of knowledge and skill or both) that can be reasonably expected of a registered teacher.¹

Professional Misconduct

Disgraceful or dishonourable conduct either in the course of the registered teacher’s profession or otherwise than in the course of the registered teacher’s profession if the conduct is of such a serious nature as would bring the profession of teaching into disrepute.²

1 Poor professional performance is defined in section 2 of the Teaching Council (Amendment) Act 2015.

2 The definition of professional misconduct comes from case law in the area of professional regulation.

Introduction

The teaching profession has a distinguished record of service in Ireland. This Code of Professional Conduct for Teachers reiterates and makes explicit the values and standards that have long been experienced by pupils/students through their participation in education.

Purpose of the Code

The Code of Professional Conduct for Teachers applies to all registered teachers. Its purpose is threefold:

1. It serves as a guiding compass as teachers seek to steer an ethical and respectful course through their career in teaching and to uphold the honour and dignity of the teaching profession.
2. It may be used by the education community and the wider public to inform their understanding and expectations of the teaching profession in Ireland.
3. It has an important legal standing and is used by the Council as a reference point in exercising its investigative and disciplinary functions under Part 5 of the Teaching Council Acts, 2001 - 2015, dealing with fitness to teach.

Existing nationally agreed procedures for dealing with difficulties and complaints at school level will continue to operate. The Council believes that, in most cases, these will offer the best means for resolving problems as they arise in the day-to-day operation of the education system.

Only complaints which are of a **serious nature** relating to registered teachers can progress to an inquiry. For further information regarding the grounds on which a complaint may be made, please see Page 9.

Structure of the Code

Having regard to the three purposes set out above, the Code begins by setting out the ethical foundation for the teaching profession. This is encapsulated in the values of Respect, Care, Integrity and Trust that are reflected throughout the Code. These core values underpin the work of the teacher in the practice of his or her profession.

The Code then sets out the standards which are central to the practice of teaching and expected of registered teachers. The standards identify teachers' professional responsibilities and are framed as statements under six separate headings: values and relationships; integrity; conduct; practice; professional development; collegiality and collaboration. The standards reflect the complexity and variety of teaching and serve to guide professional judgement and practice.

Context

The Code is in accord with the Council's Policy on the Continuum of Teacher Education, which envisions the teacher as a reflective practitioner whose key role is to educate. It also sees teachers as members of professional learning communities and advocates a role for the profession in supporting student teachers and newly qualified teachers. The Code has also been developed in the context of the Council's future role in relation to continuing professional development.³

In adopting and promoting the Code, the Teaching Council has particular regard for the broader context in which teaching takes place.

The Council is mindful of the rights of pupils/students, including their right to have a voice in matters affecting them.

The Council is also mindful of the rights of parents and the rights of teachers and of the responsibilities that accompany those rights. A valuable synergy has been developed between parents and teachers and this has great potential to benefit pupils/students and their education.

³ At the time of publication, the Teaching Council is committed to developing a national framework and guidelines for CPD in consultation with relevant stakeholders.

The Council recognises the civic and social value of education and the profound contribution that the teaching profession has made to the social, cultural and economic development of Ireland over many decades. It also recognises the key role of teacher educators in ensuring the quality of teaching. It believes that education, the teaching profession and the process of teacher education merit the active attention and support of the State and the community.

The Council is also conscious of the myriad factors beyond teachers' control which have a bearing on their work including:

- the engagement of parents and the wider community
- the commitment and engagement of pupils/ students
- the availability of resources and supports
- opportunities for teachers' professional development
- the accelerated degree of educational change
- the pace of legislative change
- economic and societal factors.

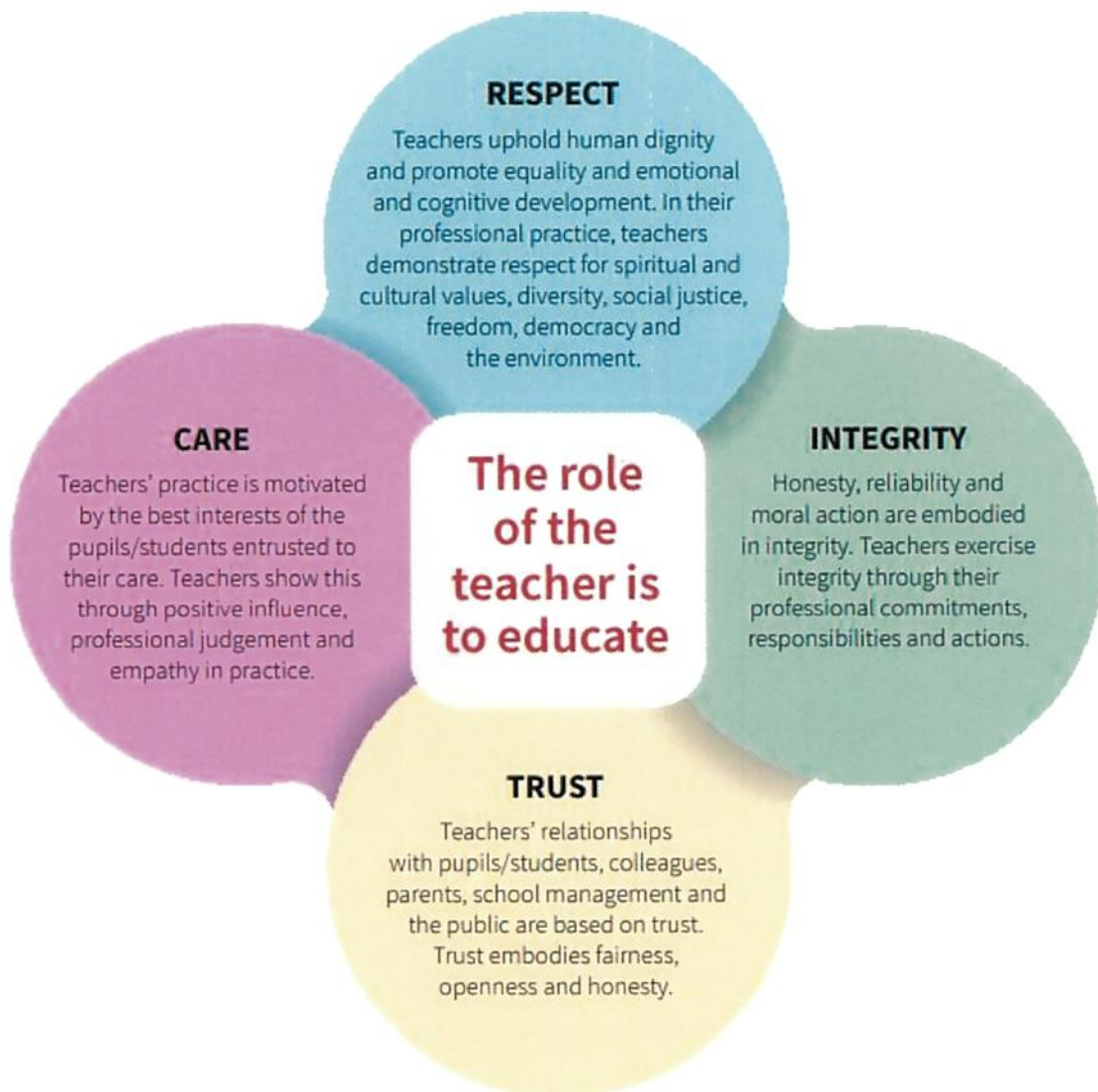
The Council believes that the Code of Professional Conduct for Teachers provides an ethical foundation along with explicit standards of conduct to be observed at all times, having regard to the broader context set out above.

In conclusion, the Code of Professional Conduct for Teachers encapsulates the fundamental ethics that inform the work of teachers. The core values and professional standards that teachers subscribe to are expressed in terms that are accessible to educators and to all others with an interest in education. Since the education system reaches into virtually every home in the country, and affects so many so deeply, it is crucial that the teaching profession's value system and professional standards are clear and readily understandable.

The Teaching Council believes that the adoption of this Code of Professional Conduct for Teachers will enhance and deepen the confidence and trust that society places in teachers.

Standards of Teaching, Knowledge, Skill, Competence and Conduct

The role of the teacher is to educate. The following ethical values underpin the standards of teaching, knowledge, skill, competence and conduct as set out in this Code.



On behalf of the teaching profession, the Teaching Council sets out the following standards that apply to all registered teachers regardless of their position.

1. Professional Values and Relationships

Teachers should:

- 1.1 be caring, fair and committed to the best interests of the pupils/students entrusted to their care, and seek to motivate, inspire and celebrate effort and success
- 1.2 acknowledge and respect the uniqueness, individuality and specific needs of pupils/students and promote their holistic development
- 1.3 be committed to equality and inclusion and to respecting and accommodating diversity including those differences arising from gender, civil status, family status, sexual orientation, religion, age, disability, race, ethnicity, membership of the Traveller community and socio-economic status, and any further grounds as may be referenced in equality legislation in the future
- 1.4 seek to develop positive relationships with pupils/students, colleagues, parents, school management and others in the school community, that are characterised by professional integrity and judgement
- 1.5 work to establish and maintain a culture of mutual trust and respect in their schools.

2. Professional Integrity

Teachers should:

- 2.1 act with honesty and integrity in all aspects of their work
- 2.2 respect the privacy of others and the confidentiality of information gained in the course of professional practice, unless a legal imperative requires disclosure or there is a legitimate concern for the wellbeing of an individual
- 2.3 represent themselves, their professional status, qualifications and experience honestly
- 2.4 use their name/names as set out in the Register of Teachers, in the course of their professional duties
- 2.5 avoid conflict between their professional work and private interests which could reasonably be deemed to impact negatively on pupils/students.

3. Professional Conduct

Teachers should:

- 3.1 uphold the reputation and standing of the profession
- 3.2 take all reasonable steps in relation to the care of pupils/students under their supervision, so as to ensure their safety and welfare
- 3.3 work within the framework of relevant legislation and regulations
- 3.4 comply with agreed national and school policies, procedures and guidelines which aim to promote pupil/student education and welfare and child protection
- 3.5 report, where appropriate, incidents or matters which impact on pupil/student welfare
- 3.6 communicate effectively with pupils/students, colleagues, parents, school management and others in the school community in a manner that is professional, collaborative and supportive, and based on trust and respect
- 3.7 ensure that any communication with pupils/students, colleagues, parents, school management and others is appropriate, including communication via electronic media, such as e-mail, texting and social networking sites
- 3.8 ensure that they do not knowingly access, download or otherwise have in their possession while engaged in school activities, inappropriate materials/images in electronic or other format
- 3.9 ensure that they do not knowingly access, download or otherwise have in their possession, illicit materials/images in electronic or other format
- 3.10 ensure that they do not practise while under the influence of any substance which impairs their fitness to teach.

4. Professional Practice

Teachers should:

- 4.1 maintain high standards of practice in relation to pupil/student learning, planning, monitoring, assessing, reporting and providing feedback
- 4.2 apply their knowledge and experience in facilitating pupils'/students' holistic development
- 4.3 plan and communicate clear, challenging and achievable expectations for pupils/students
- 4.4 create an environment where pupils/students can become active agents in the learning process and develop lifelong learning skills
- 4.5 develop teaching, learning and assessment strategies that support differentiated learning in a way that respects the dignity of all pupils/students
- 4.6 inform their professional judgement and practice by engaging with, and reflecting on, pupil/student development, learning theory, pedagogy, curriculum development, ethical practice, educational policy and legislation
- 4.7 in a context of mutual respect, be open and responsive to constructive feedback regarding their practice and, if necessary, seek appropriate support, advice and guidance
- 4.8 act in the best interest of pupils/students.

5. Professional Development

Teachers should:

- 5.1 take personal responsibility for sustaining and improving the quality of their professional practice by:
 - o actively maintaining their professional knowledge and understanding to ensure it is current
 - o reflecting on and critically evaluating their professional practice, in light of their professional knowledge base
 - o availing of opportunities for career-long professional development.

6. Professional Collegiality and Collaboration

Teachers should:

- 6.1 work with teaching colleagues and student teachers in the interests of sharing, developing and supporting good practice and maintaining the highest quality of educational experiences for pupils/students
- 6.2 work in a collaborative manner with pupils/students, parents/guardians, school management, other members of staff, relevant professionals and the wider school community, as appropriate, in seeking to effectively meet the needs of pupils/students
- 6.3 cooperate with the Inspectorate of the Department of Education and Skills and other statutory and public non-statutory educational and support services, as appropriate
- 6.4 engage with the planning, implementation and evaluation of curriculum at classroom and school level.

Complaints relating to registered teachers

Existing nationally agreed procedures for dealing with difficulties and complaints at school level will continue to operate. The Council believes that, in most cases, these will offer the best means for resolving problems as they arise in the day-to-day operation of the education system.

Only complaints which are of a serious nature relating to registered teachers can progress to an inquiry.

Complaints can be made by anyone to the Teaching Council in relation to a registered teacher on one or more of the grounds which are set out below in section 42(1) of the Teaching Council Acts, 2001 – 2015.

The grounds include professional misconduct, poor professional performance, conduct contrary to the Code of Professional Conduct for Teachers and in certain circumstances, convictions.

All complaints will be considered in accordance with the Teaching Council Acts, 2001 – 2015 and procedures and rules approved by Council. A hearing may be held in relation to a complaint, if deemed appropriate.

Section 42(1) of the Teaching Council (Amendment) Act, 2015:

A person (including the Council) may make a complaint to the Investigating Committee in relation to a registered teacher, and the Committee may consider the complaint, where that complaint concerns any of the following matters in relation to the registered teacher:

- (a) that he or she has failed to comply with, or has contravened, any provision of this Act, the Act of 1998, the Education (Welfare) Act 2000, the Education for Persons with Special Educational Needs Act 2004, the Education and Training Boards Act 2013 or any regulations, rules or orders made under those Acts;
- (b) that his or her behaviour constitutes professional misconduct;
- (c) poor professional performance;
- (d) that he or she has engaged in conduct contrary to a code of professional conduct established by the Council under section 7(2)(b);
- (e) that his or her registration is erroneous due to a false or fraudulent declaration or misrepresentation;
- (f) that he or she is medically unfit to teach;
- (g) that he or she has been convicted in the State of an offence triable on indictment or convicted outside the State of an offence consisting of acts or omissions that, if done or made in the State, would constitute an offence triable on indictment;
- (h) that he or she has failed to comply with an undertaking or to take any action specified in a consent given in response to a request under section 43(6).

For further information on the complaint process, please refer to the Professional Standards section of our website, www.teachingcouncil.ie



An Chomhairle Mhúinteoireachta
The Teaching Council

Block A, Maynooth Business Campus,
Maynooth, Co. Kildare, W23 Y7X0, Ireland

Lo-Call 1890 224 224
Telephone + 353 1 651 7900
Facsimile +353 1 651 7901
Email info@teachingcouncil.ie

www.teachingcouncil.ie

An Chomhairle
Mhúinteoireachta 
The Teaching Council